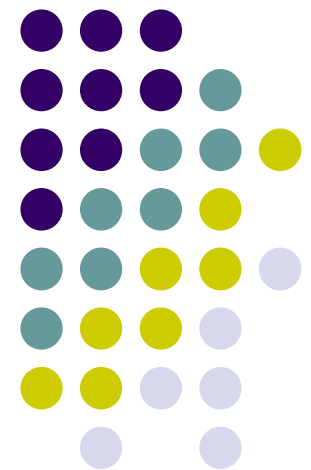


# Organizing and Coordination for Logistics Activities

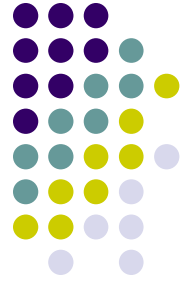
---

Felea Mihai Adrian

*Academy of Economic Study, Bucharest*

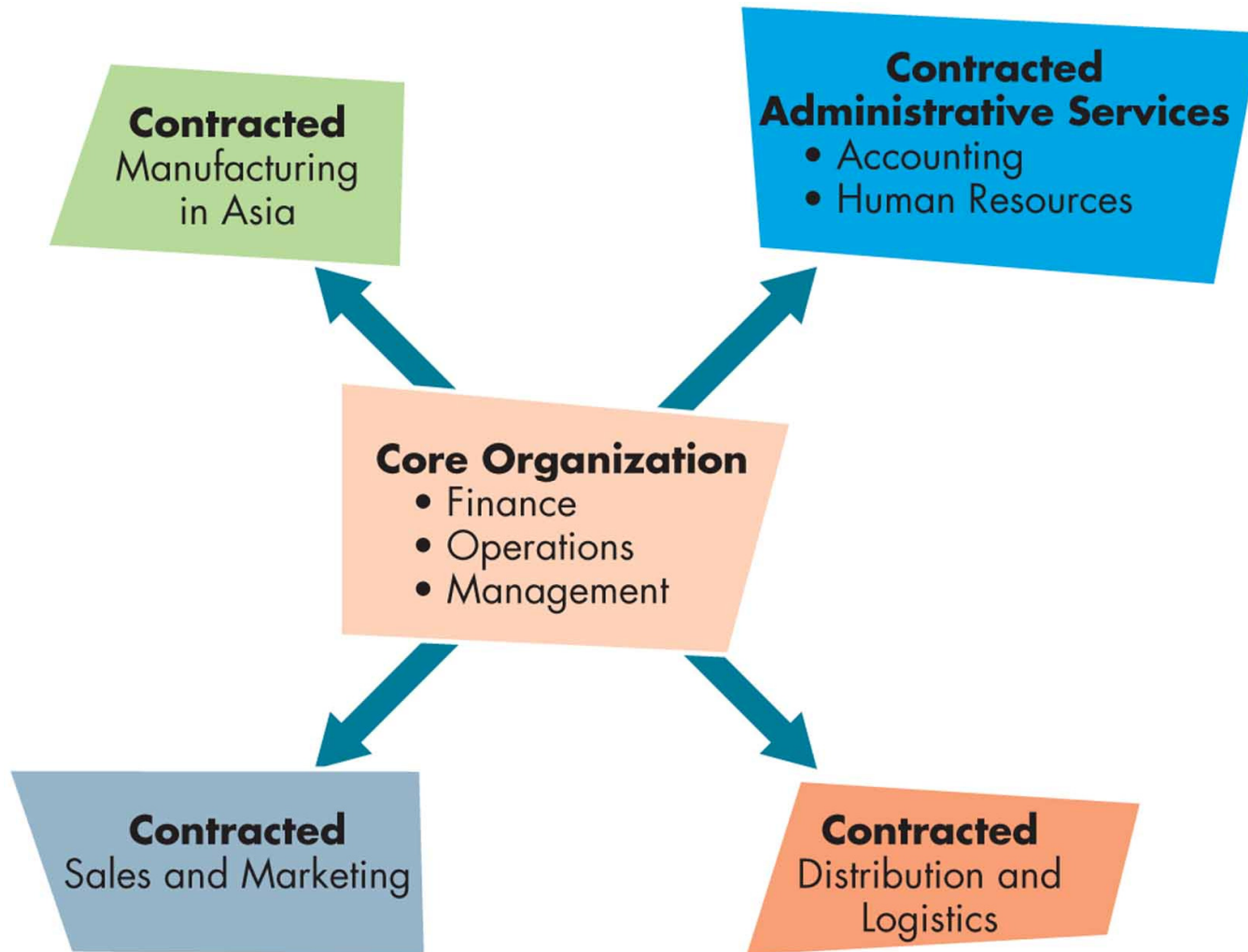
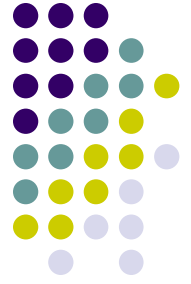


# Types of Logistics Organizational Structure

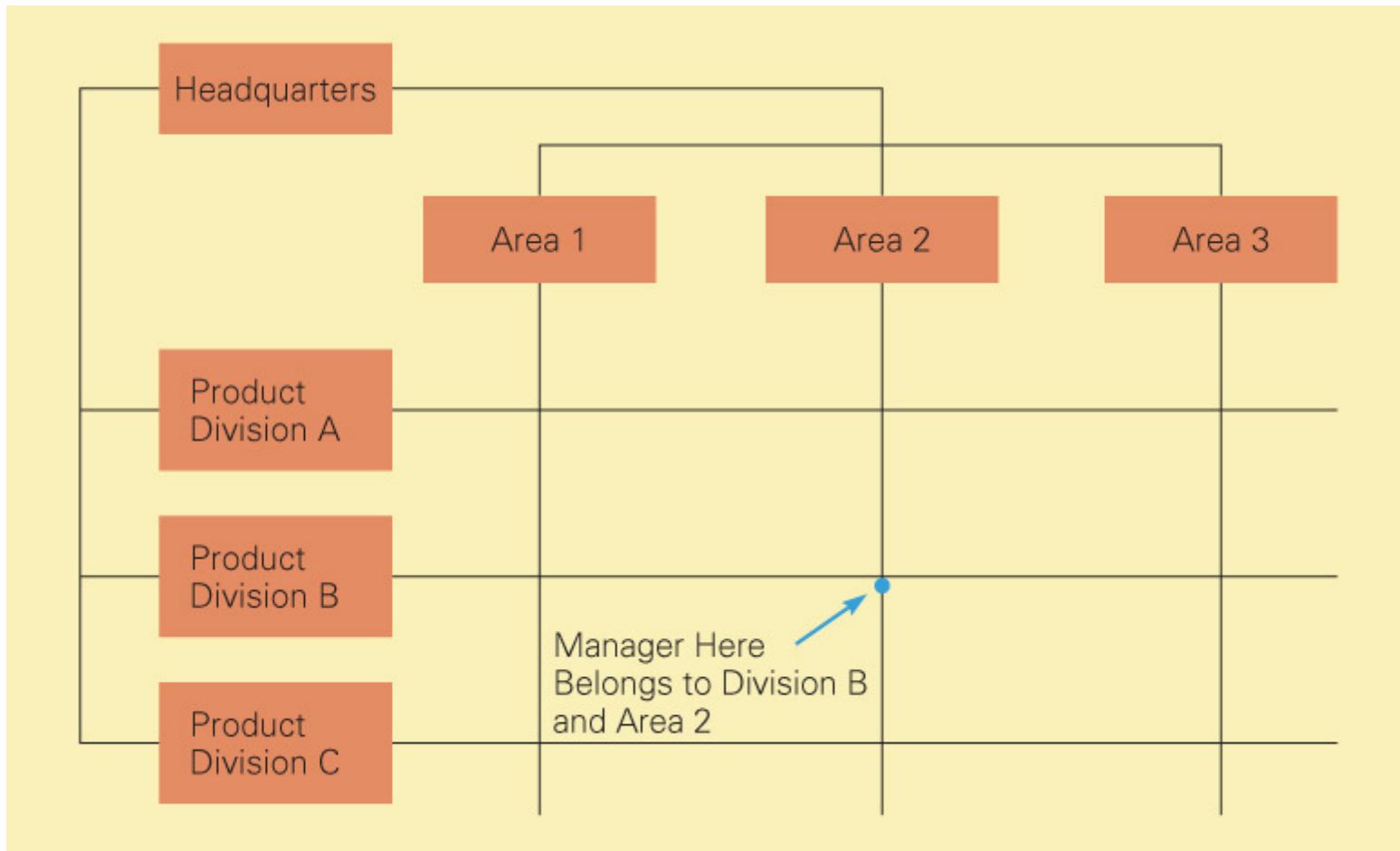
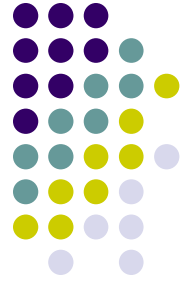


- Divisions
- Matrix Organizations
- Hollow Corporations and Virtual Organizations
- Interorganizational or Interfunctional Teams
- Functional Silos

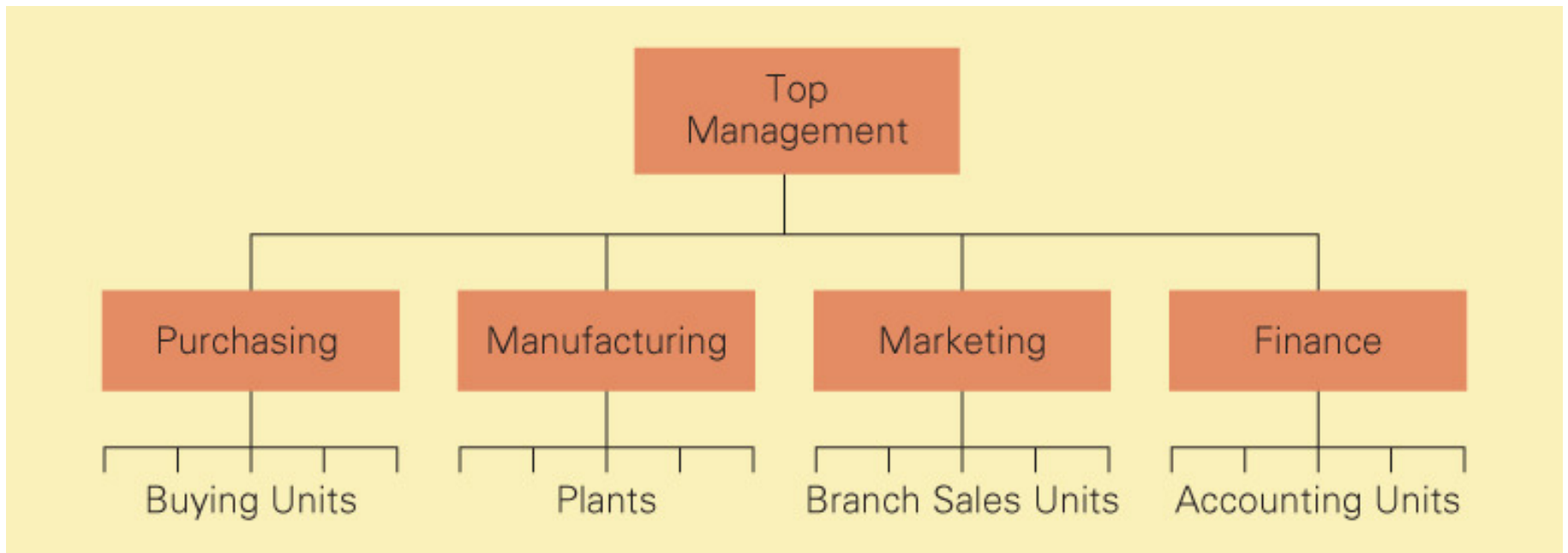
# The Virtual Organization



# Global Matrix Structure



# Typical Functional Structure

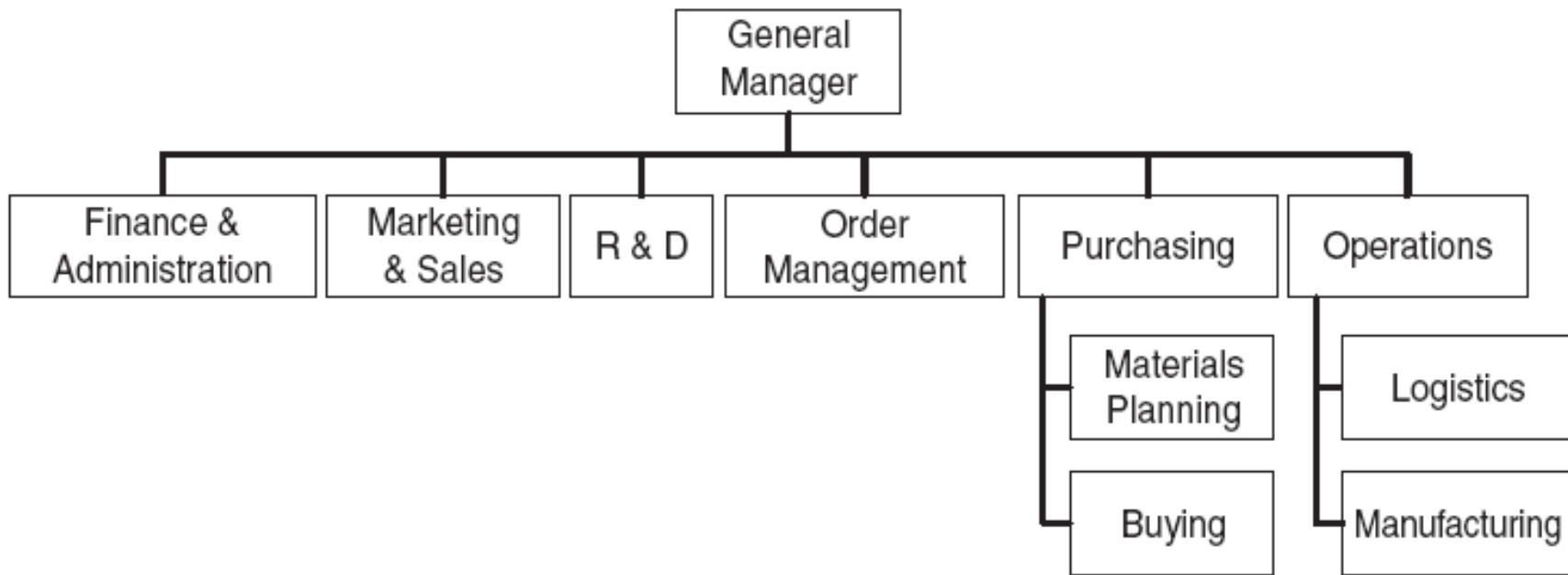
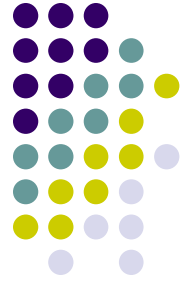


# Evolution Of The Supply Chain Organization



- The traditional operations organization is functionally oriented. That is, key supply chain activities and associated groups report directly to their relevant functional managers.
- This type of organizational structure was typical in the 1970s and 1980s, and it is still quite common today.

# Functional Supply Chain Organization

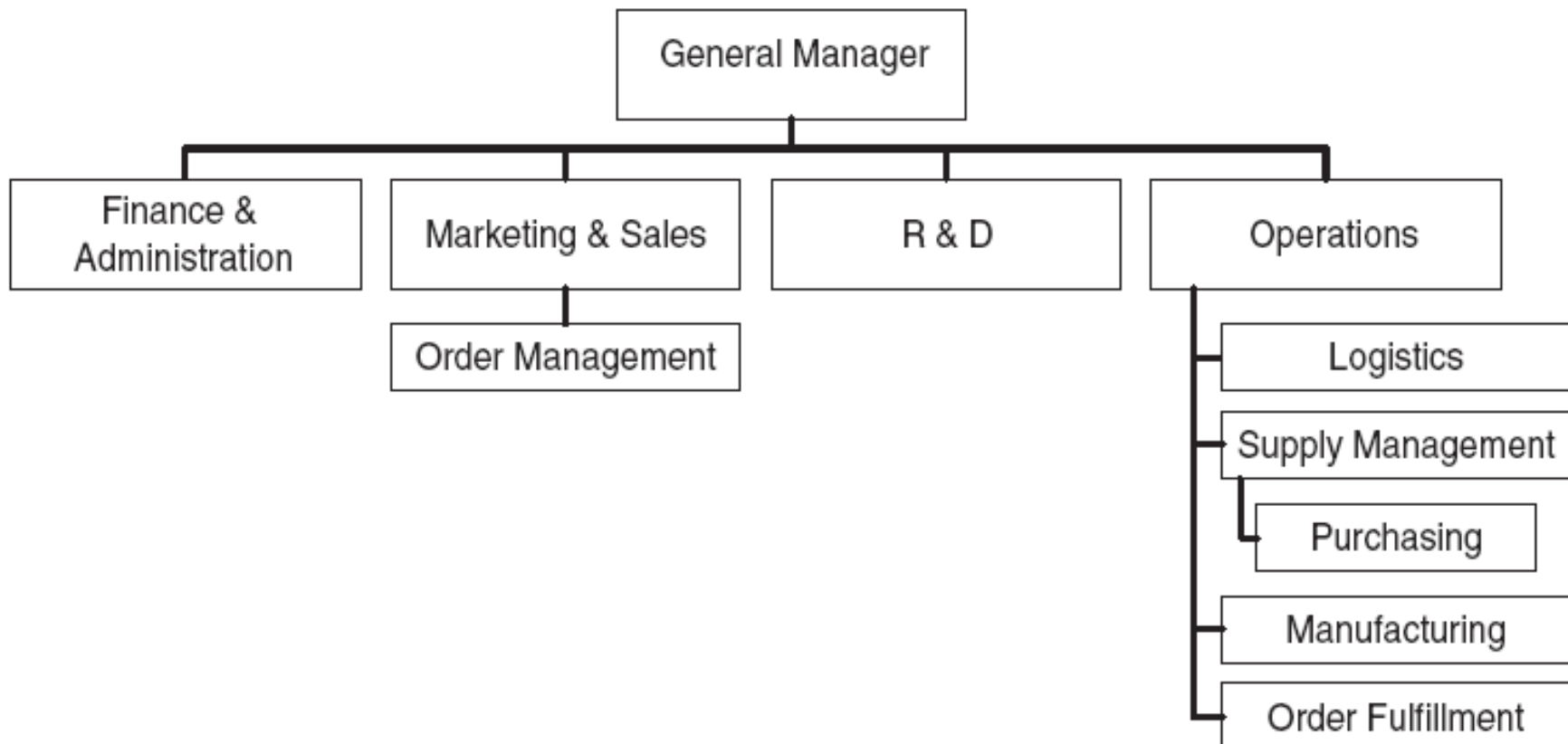


# Evolution Of The Supply Chain Organization

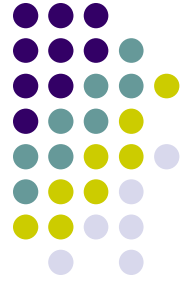


- In the 1980s and 1990s, companies began to transition to organizational structures that grouped many, but not necessarily all, core supply chain functions in one department.

# Transitional Supply Chain Organization

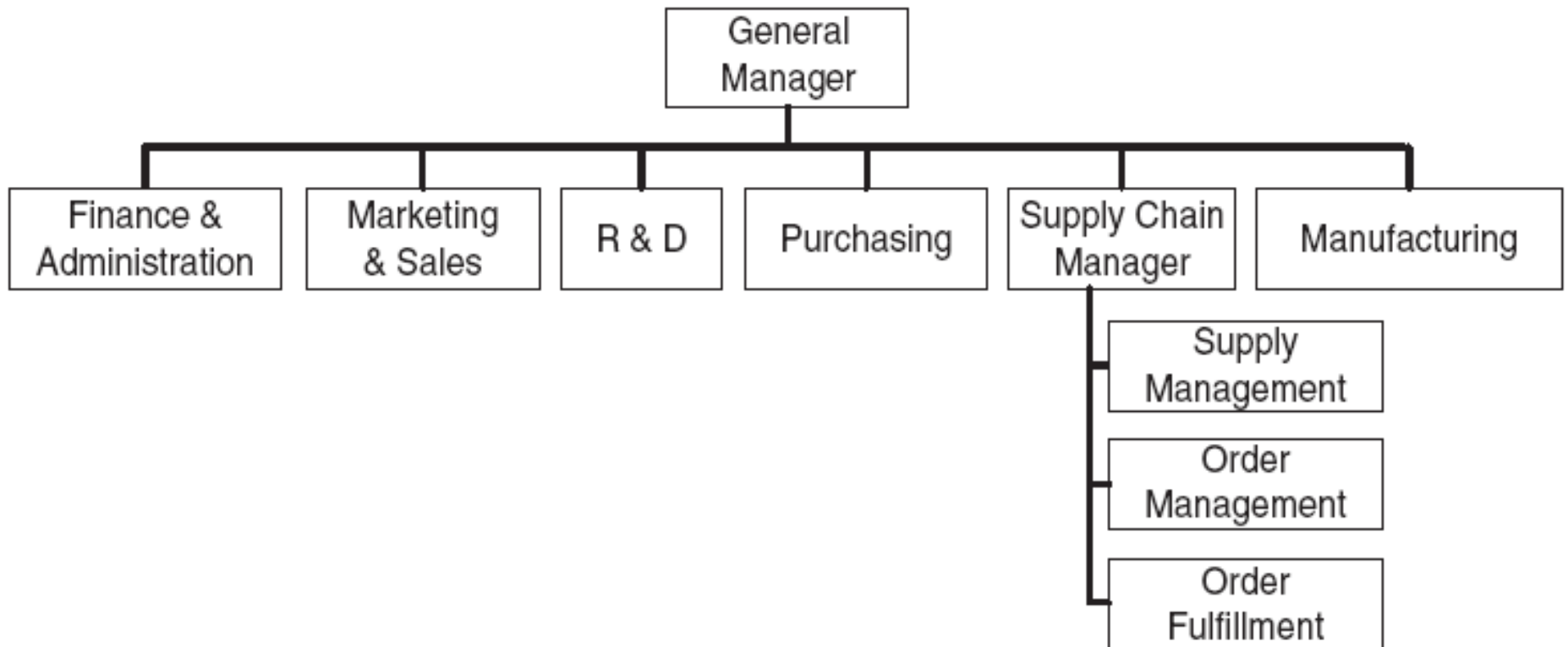


# Evolution Of The Supply Chain Organization

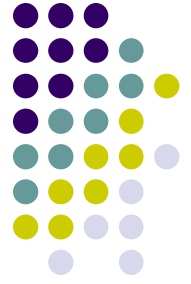


- The term supply chain didn't come into vogue until the middle to late 1990s. At that time, we began to see the emergence of positions such as supply chain manager or vice president of supply chain.
- This period also marked the beginning of the now-widespread philosophy of the supply chain as an end-to-end process.

# Partially Integrated Supply Chain Organization

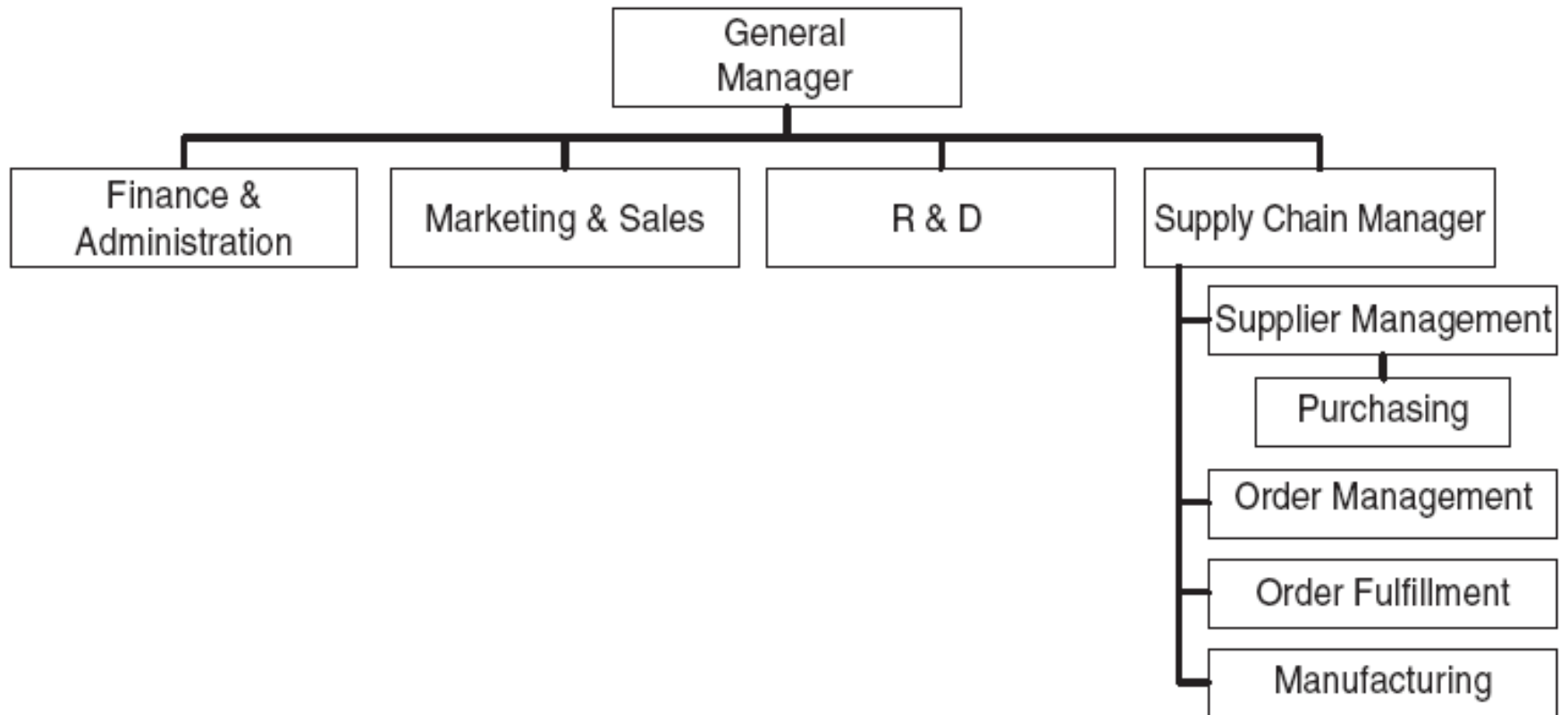


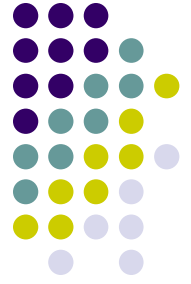
# Evolution Of The Supply Chain Organization



- In the integrated model, a supply chain management group is responsible for cross functional operational objectives, such as inventory days of supply, order fulfillment, lead time, or customer on-time delivery.
- In the integrated model, the supply chain manager has full control over the resources needed to execute the supply chain strategy.

# Integrated Supply Chain Organization



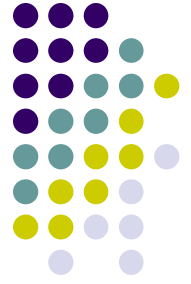


# Logistics Coordination

Coordination of the various logistics activities can be achieved in several ways. The basic systems are generally structured through a combination of the following:

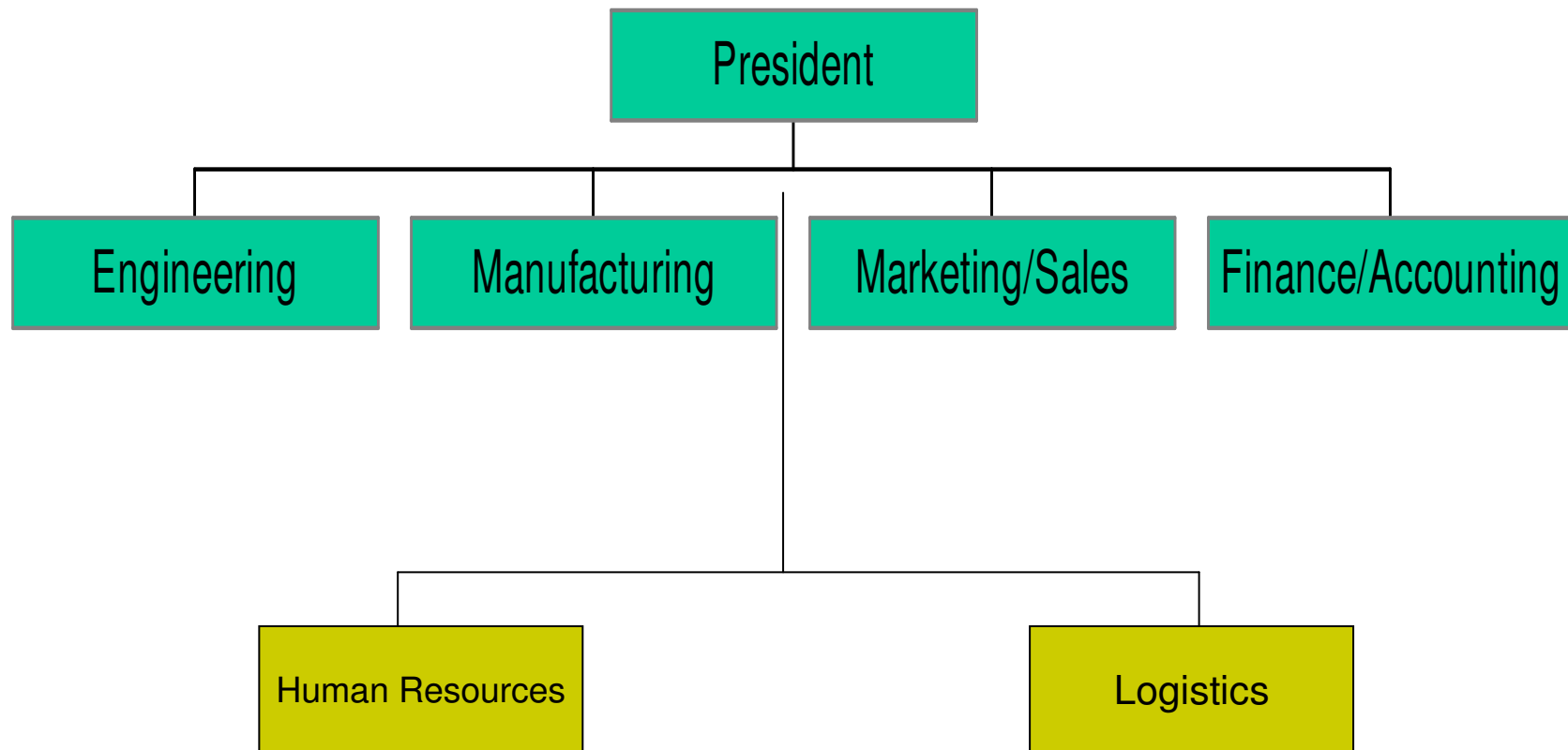
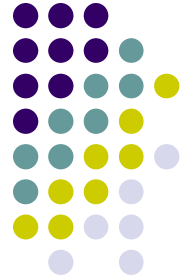
- Strategic versus Operational Structure
- Centralized versus Decentralized Structure
- Line versus Staff Structure.

# Logistics Coordination

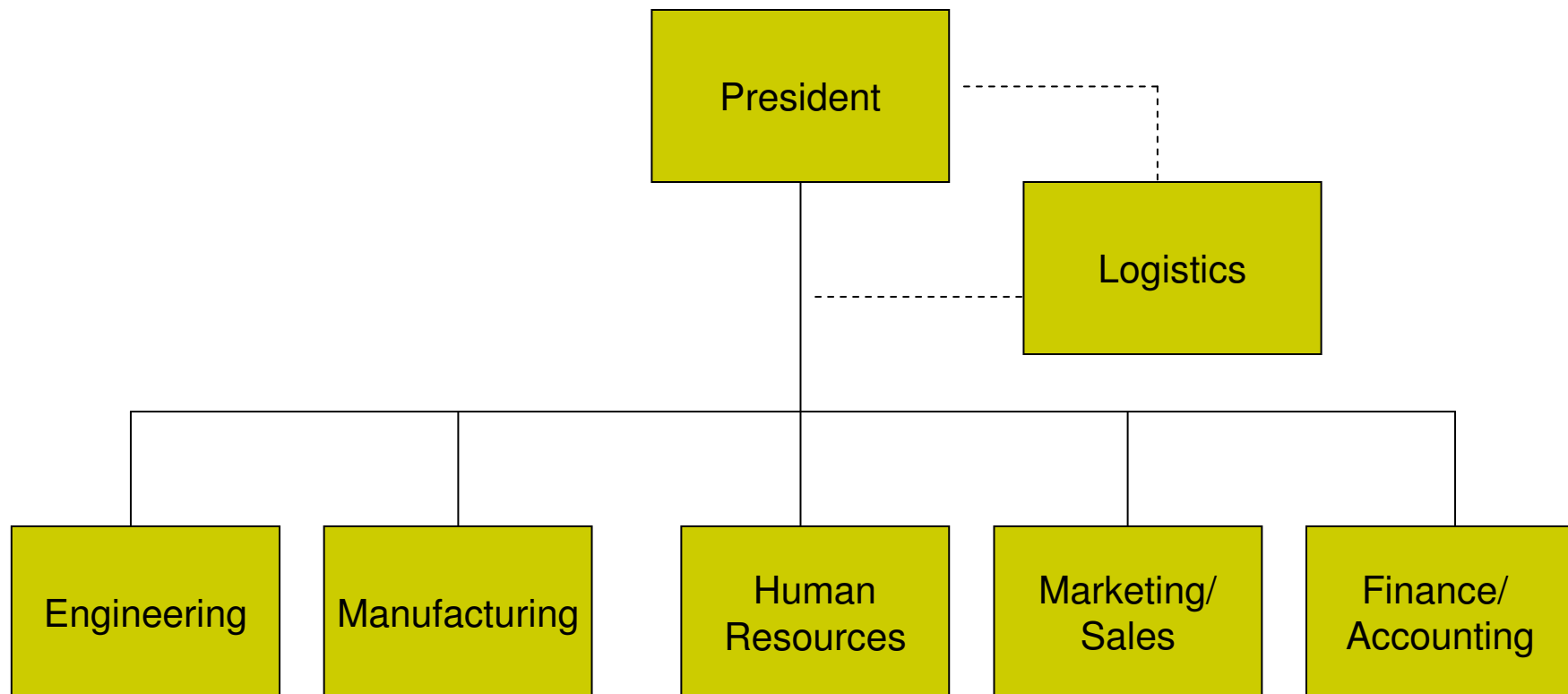
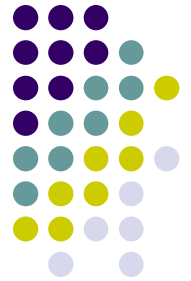


Other organizational approaches are possible. Examples include logistics as a function, logistics as a programme, logistics as a process and the matrix organization approach.

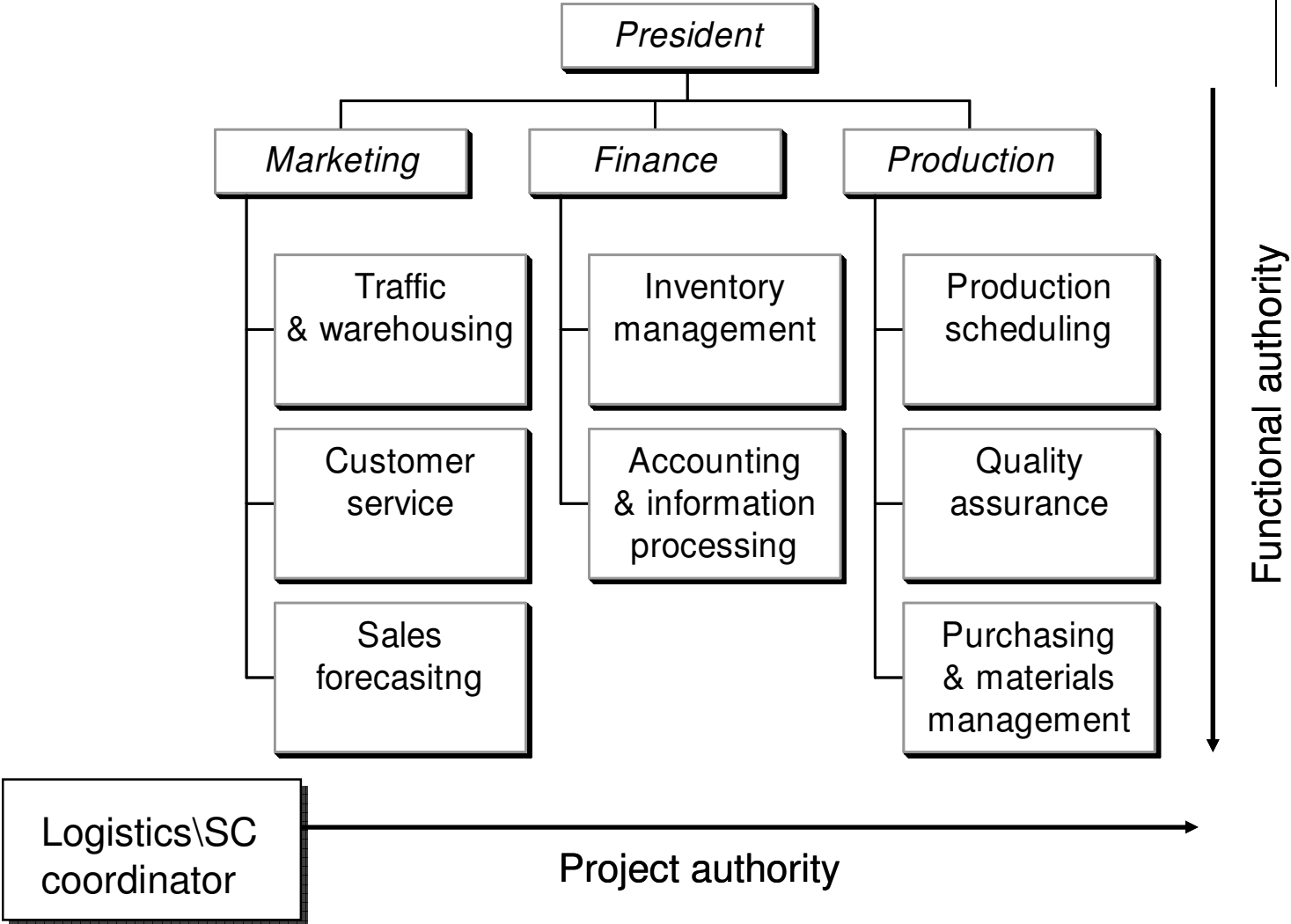
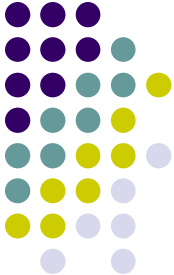
# Organization Design for Logistics as a Function

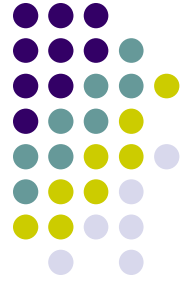


# Organization Design for Logistics as a Program



# Logistics Matrix Organization





## Conclusions

Many companies still think of their supply chain organization as a set of functions that complements manufacturing or as a set of “operations” departments such as receiving, production, and logistics. To provide effective end-to-end supply chain management, the organization should include all the core supply chain processes - *plan, source, make, deliver, and return* - as well as the supporting infrastructure.



**Thank you very much  
for your kind attention!**